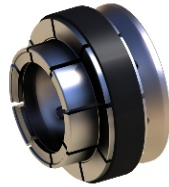
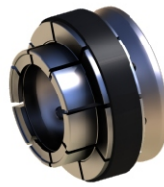


S Service Info

Mazda



165 400 001



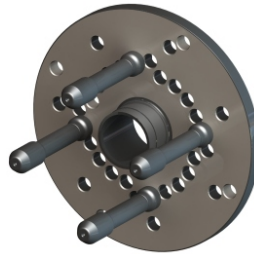
165 400 002



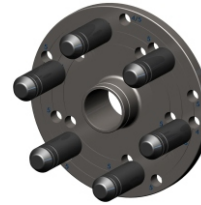
160 400 060



160 400 062



241e801 409
4 x 271 994 121



231e505 403
6 x 271 804 014

Zentriersatz
Mazda

Best-#:
280 400 099

Centering Kit
Mazda

Part-#:
280 400 099

Zentriertabelle Centering Chart

Felgendaten	Mittenloch / Centerbore	Lochkreis / Bolt Circle
Vehicle Data	HAWEKA-#	HAWEKA-#
Mazda	Bolzen / Suds	4 x 271 994 121
	Bolzen / Suds	6 x 271 804 014
323('90-'03)/MX-3('91-'98)/MX-5('-05)/MX-5 Miata(-'05)/121('-96)/Demio('98-'03)/Protegé('90-'01)/2('07-)	54 165 400 001	4x100 241e801 409
121('96-'03)/2('03-'07)	63,3 165 400 002	4x108 241e801 409
121 DA('88-'91)/626('88-'91)	60 165 400 001	4x114,3 241e801 409
626('92-'02)/Xedos 6('92-'99)/Xedos 9('93-'02)/RX-7('-02)/MPV('-06)/Premacy('99-'05)/Tribute('00-)/929('-98)/MX-6('-97)/6('02-)/323 2.0 Sportive,V6('01-'03)/Millenia('93-'03)/Protegé('02-'03)/RX-8('03-)/3('03-)/5('05-)/MX-5('06-)/MX-5 Miata('06-)/CX-7('06-)/CX-9('07-)	67 165 400 002	5x114,3 231 505 403
B-Serie('-06)/BT-50('06-)/E-Serie	93 160 400 060	6x139,7 231 505 403
B-Serie('-06)	110 160 400 062	6x139,7 231 505 403